

Half termly Forecast

Class: Yellow

Year: 3

Teachers: Azmina & Grace

Term:1.2

Year: 2009/10

Mathematical Understanding

Identify, group, match, sort and compare common shapes

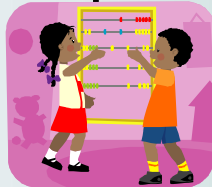
Recognise symmetry properties of 2D shapes and patterns

Record amounts of money using pounds, and/or pence, converting between them as appropriate

How to handle money in the context of shopping, saving up and enterprise activity.

Use standard units to estimate measures and to measure with appropriate accuracy

Recognise and use equivalent representation for time.



Scientific technology and understanding

Changing materials

Explain what I already know about materials

Identify, group and select materials using their properties

Investigate what happens when materials are mixed and whether and how they can be separated again



Religious Education

Stories for different religions

Explore and discuss some religious and moral stories

Christmas

Investigate and suggest meaning for celebrations, worship and rituals

Changes

Understanding the Arts

To develop drawing skills linked to PSHE and body changes

Design and create images in response to their personal ideas

To refine their drawing technique

African Drumming every Monday

Understanding English, communication &

language

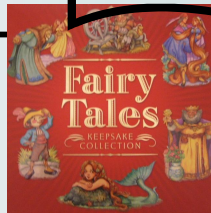
Changes- exploring changes in traditional stories over-time

Explain their opinion and ideas modifying them in light of what they have heard

Convey actions, themes and emotions through role-play and drama

Explore similarities and differences in traditions, different culture and countries

M10. to use inference and deduction to find meaning beyond the literal



Understanding physical development, health and well-being

Reflect on past changes and experiences and manage future learning and behaviour

To manage their feeling using appropriate strategies, becoming increasingly aware of their own and others feelings

Understand the change your body goes through and how to be healthy



History, Geographical and social Understanding

Draw a map of the Isle of Dogs, including key features

Use different sources to compare houses in the past to my own house

Use first-hand experience to compare the docks in the past to the present?

Suggest reasons for why people from other countries might want to move to England / to the Isle of Dogs

Outcome:

To be able to use different sources to investigate the past and compare with the present

To be able to recognise and explain changes to the local area and to people's way of life

Helping at home

Share your favourite traditional story and see if you can find some more in the library

Have fun cooking and look carefully at how the ingredients change as it heats up, cooks down, boils etc

Don't forget! Practice your spellings

PE and Book bags every Monday and Thursday